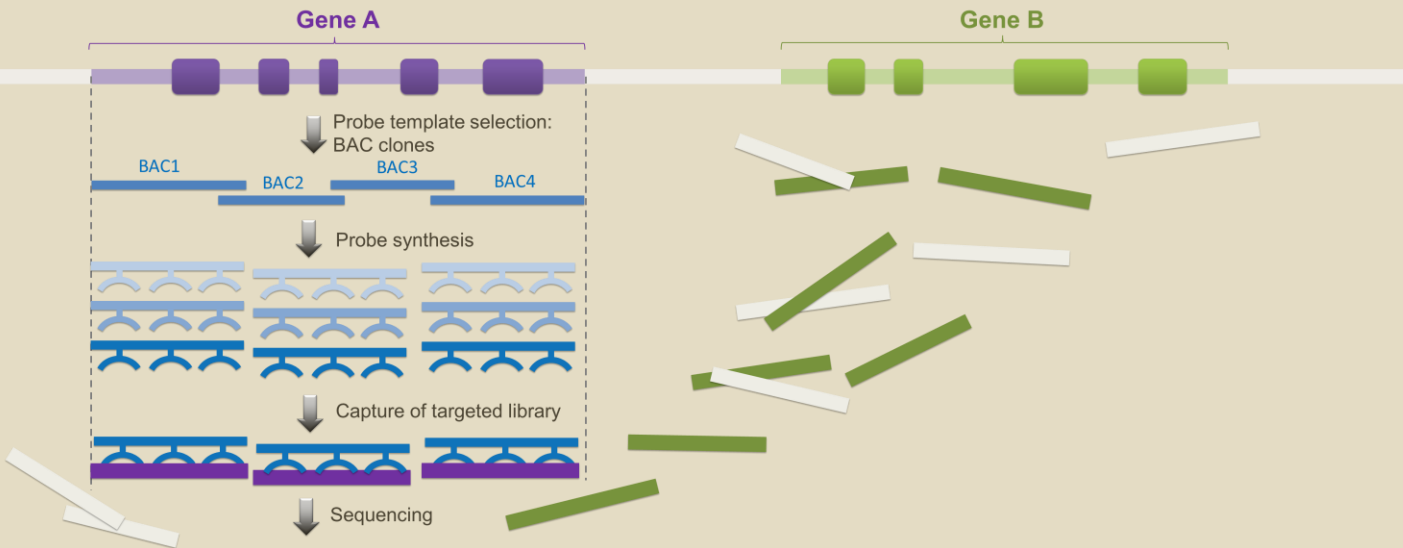
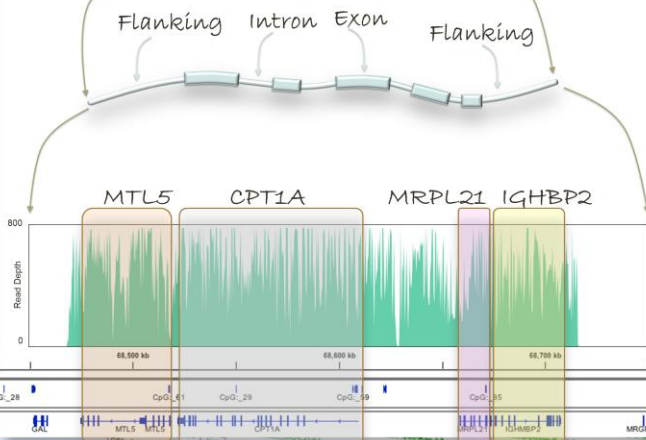
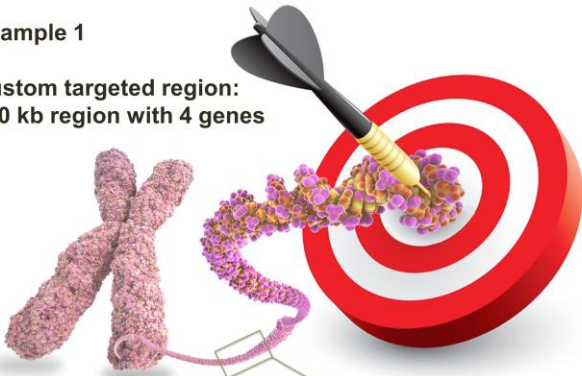


Targeted Sequencing



Example 1

Custom targeted region:
200 kb region with 4 genes



Large targeted region

Our CATCH-Seq® technology generates probes corresponding to large blocks of a genome, including exons, introns and flanking regions.

High Specificity

Greater specificity with longer probes (200-300bp)

High quality

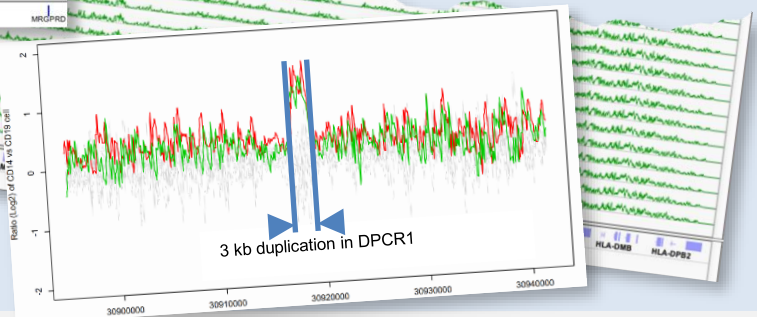
Better coverage of the targeted region including repeats

Low cost

Low cost than oligo based probes.

Example 2

Complete MHC sequencing
3.8 mb region



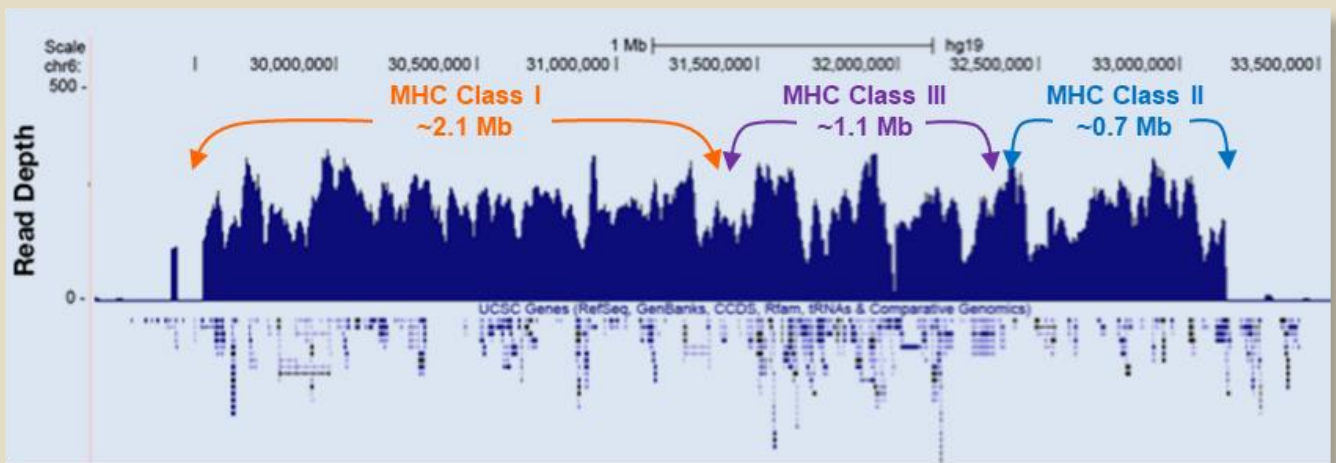
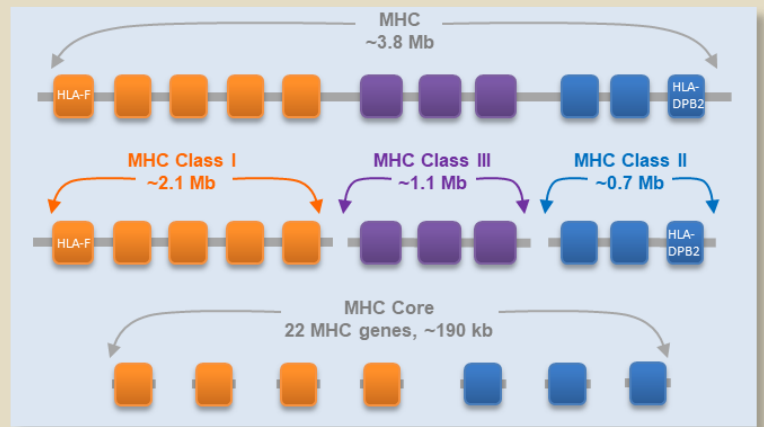
Web: biodynamami.com
Tel: (256) 872-0805
Email: support@biodynamami.com

Fast
Simple
Affordable
High-Quality



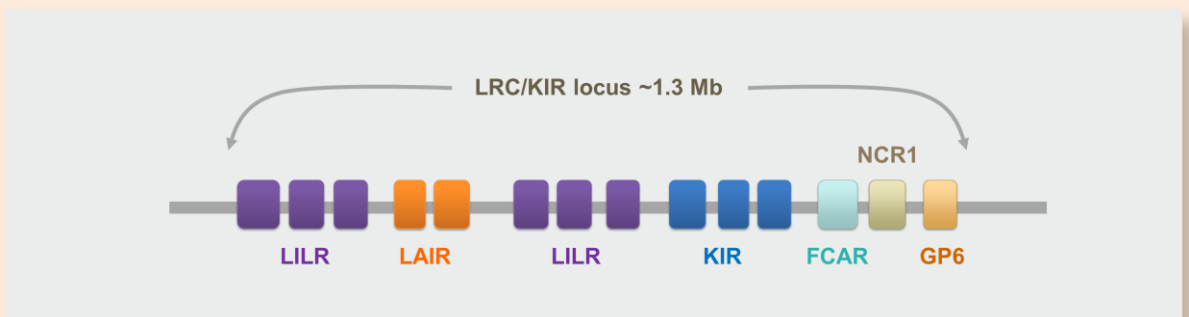
MHC/HLA Locus

- Integration of library prep with capture
 - Simplifies the procedure
 - Enhances the capture efficiency
- Multiple choices of targeted MHC regions
 - Full 3.8 MB of MHC region
 - 2.1 MB Class I region
 - 0.7 MB Class II region
 - 1.1 MB Class III region
 - 190 kb MHC core regions (22 MHC genes)
- Easy detection of SNPs, indels, and structural variants
 - The only reagent provides intact sequence information



LRC/KIR Locus

- Full capture of LRC/KIR region
 - Covers 1.3 MB regions
 - Covers exons, introns, 5' regulatory regions, 3' regulatory regions, and beyond.
- Easy detection of SNPs, indels, and structural variants
 - The only reagent provides intact sequence information



Web: biodynamami.com
 Tel: (256) 872-0805
 Email: support@biodynamami.com

Fast
 Simple
 Affordable
 High-Quality



Breast Cancer Panel

- Full genomic regions of 117 genes
 - Covers ~9 MB regions
 - Covers exons, introns, 5' regulatory regions, 3' regulatory regions.
- Easy detection of SNPs, indels, and structural variants
 - The only reagent provides intact sequence information

ABCB1	BRCA2	DYNLRB1	FOXA1	IGFBP1	MAPK3	N4BP2L1	PIK3CA	SEC16A	TP53
ABCG2	CCND1	EGF	FUS	IGFBP3	MAPK8	NBR2	PIK3R1	SERPINE1	TRIM46
AKT1	CCND2	EGFR	GATA3	IL6	MDM2	NEK2	PLAU	SFN	TUSC2
APC	CDH1	EP300	GDPD3	INPP5E	MGMT	NME1	PNMT	SFRP1	TWIST1
AR	CDK2	ERBB2	GLI1	ITCH	MINE1	NME2	PPP1R1B	SNAI2	VEGFA
ARHGAP9	CDKN1A	ERBB2	GPR137	JUN	MKI67	NOTCH1	PTEN	SRC	WEE1
ATM	CDKN1C	ERBB3	GRB7	KLLN	MLH1	NPRL2	PTGS2	STARD3	XBP1
BAD	CDKN2A	ESR1	GSTP1	KRT5	MMP2	NR3C1	PYCARD	TCAP	ZAR1L
BAP1	CSF1	ESR2	HIC1	LPAR6	MMP9	OVCA2	RASSF1	TFF3	ZMYND10
BCL2	CTNNB1	FBXO32	ID1	MAP1LC3A	MUC1	PA2G4	RB1	TGFB1	
BIRC5	CTSD	FGFR1	IGF1	MAP3K1	MUC16	PGAP3	RET	THBS1	
BRCA1	CYB561D2	FGFR2	IGF1R	MAPK1	MYC	PGR	RPL41	THBS3	

Targeted Sequencing Service

MHC/HLA Locus

Multiple choices of targeted MHC regions

- Full 3.8 MB of MHC region
- 2.1 MB Class I region
- 0.7 MB Class II region
- 1.1 MB Class III region
- 190 kb MHC core regions (22 MHC genes)

LRC/KIR Locus

Full capture of LRC/KIR region

- Covers 1.3 MB regions
- Covers exons, introns, 5' regulatory regions, 3' regulatory regions.

Breast Cancer Panel

Full genomic regions of 117 genes

- Covers ~9 MB regions
- Covers exons, introns, 5' regulatory regions, 3' regulatory regions.

Custom Targeted Sequencing

Choose your own targeted regions

- Large target region
 - Covers several hundred kb to several mb of regions
 - Covers exons, introns, 5' regulatory regions, 3' regulatory regions.
- Multiple target regions possible
 - Single or multiple target regions
- Low cost
- Sample multiplexing

Targeted Sequencing Product: <https://biodynami.com/targeted-sequencing/>

Targeted Sequencing Service: <https://biodynami.com/targeted-sequencing-service>



Web: biodynami.com
Tel: (256) 872-0805
Email: support@biodynami.com

Fast
Simple
Affordable
High-Quality

