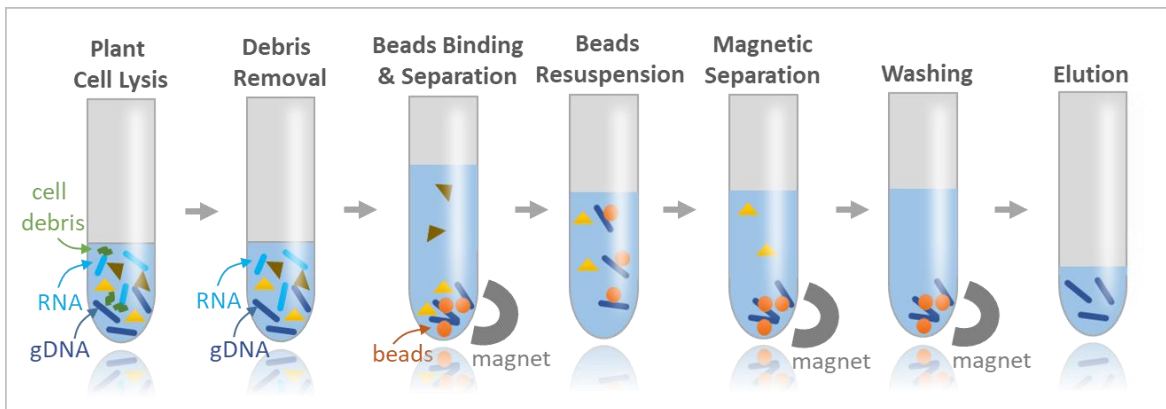


# Genomic DNA Extraction Kit for Plants (HMW, Magnetic Beads)

HMW: 50 kb to 200 kb

High Purity with Magnetic Beads Technology

The **Genomic DNA Extraction Kit for Plants (HMW, Magnetic Beads)** is a fast and simple reagent for isolating high molecular weight (HMW) genomic DNA from plants using Solid Phase Reversible Immobilization (SPRI) magnetic beads. The magnetic beads-based kit provides a consistent and reliable approach for high-quality plant DNA extraction due to the high-binding capacity and quick magnetic response time.



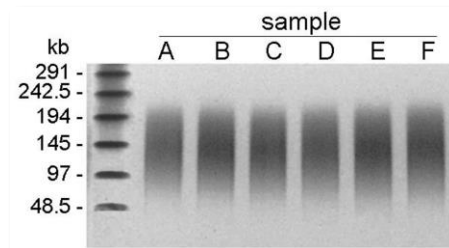
HMW Genomic DNA:  
50 kb to 200 kb

High Purity

Simple

- No vacuum
- No column

Specifications	
Technology	Magnetic beads
Tissue amount	Up to 50 mg
Genomic DNA size	50-200 kb
Genomic DNA yield	Up to 10 µg (dependent on the plant)
Elution volume	100 µl
O.D. 260/280	Around 1.8
O.D. 260/230	Between 1.5-2.5. May have exceptions.



A portion of the extracted genomic DNA samples from various plants were loaded on a PFGE gel with a DNA ladder indicated.



Web: [biodynami.com](http://biodynami.com)  
Tel: (256) 872-0805  
Email: [support@biodynami.com](mailto:support@biodynami.com)

Fast  
Simple  
Affordable  
High-Quality



# Genomic DNA Extraction Kit for Plants (HMW, Magnetic Beads)

HMW: 50 kb to 200 kb

High Purity with Magnetic Beads Technology

Yield Comparison by Qubit fluorometer

Sample Input			Extracted DNA Amount	
Plant	Parts	Amount	BioDynami	Company O
spinach	leaf	20 mg	1.78 µg	0.54 µg
cilantro	leaf	20 mg	1.43 µg	0.55 µg
holly	leaf	10 mg	0.48 µg	0.15 µg
pothos	leaf	40 mg	0.56 µg	0.12 µg
garlic	root	35 mg	8.06 µg	1.78 µg
apple	seed	50 mg	0.83 µg	0.49 µg
pepper	seed	25 mg	3.63 µg	0.41 µg

Yield Comparison by Nanodrop

Sample Input			Extracted DNA Amount	
Plant	Parts	Amount	BioDynami	Company O
spinach	leaf	20 mg	3.32 µg	1.13 µg
cilantro	leaf	20 mg	2.87 µg	1.14 µg
holly	leaf	10 mg	0.71 µg	0.36 µg
pothos	leaf	40 mg	0.65 µg	0.31 µg
garlic	root	35 mg	8.63 µg	2.35 µg
apple	seed	50 mg	2.58 µg	1.39 µg
pepper	seed	25 mg	4.82 µg	0.97 µg

Comparison of O.D. 260/280

Plant	Parts	BioDynami	Company O
spinach	leaf	1.96	1.73
cilantro	leaf	1.86	1.62
holly	leaf	1.64	1.92
pothos	leaf	1.71	1.44
garlic	root	1.73	1.69
apple	seed	1.89	1.72
pepper	seed	1.77	1.65

Comparison of O.D. 260/230

Plant	Parts	BioDynami	Company O
spinach	leaf	2.05	0.98
cilantro	leaf	2.01	0.67
holly	leaf	2.16	0.72
pothos	leaf	2.18	0.22
garlic	root	2.19	1.52
apple	seed	1.94	1.53
pepper	seed	1.28	1.03

Kit Name	Reactions	Cat.#
Genomic DNA Extraction Kit for Plants (HMW, Magnetic Beads)	50	50021S
	50, with pestles and tubes	50021SP
	200, with pestles and tubes	50021L
	200	50021LP

More details at <https://biodynami.com/product/genomic-dna-extraction-kit-for-plants>



Web: [biodynami.com](http://biodynami.com)  
Tel: (256) 872-0805  
Email: [support@biodynami.com](mailto:support@biodynami.com)

Fast  
Simple  
Affordable  
High-Quality

