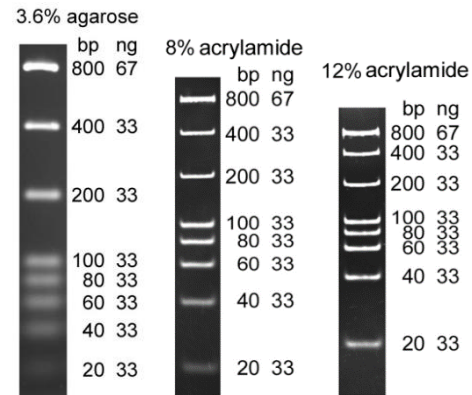


20 bp DNA ladder, ready-to-load

Catalog No. 10002S: 100 gel lanes
Catalog No. 10002L: 400 gel lanes
Concentration: 50 ng/μl
Storage: at 4°C for periods up to 6 months.
 For longer periods, store at -20°C.

Description

- For sizing and quantification of double strand DNA fragments.
- Composed of eight bands as shown on right.
- Premixed with 6X DNA loading buffer for direct gel loading.



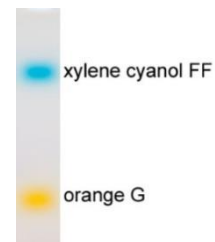
Protocol

1. Load 6 μl of DNA ladder per gel lane (or 1.2 μl per 1 mm gel lane).
2. Mix 1 volume of 6X DNA loading buffer with 5 volume of DNA sample, load mixture on gel.
3. Perform electrophoresis.

Reagents Supplied

6X DNA loading buffer (1.5 ml)

- 6X DNA loading buffer is used for loading DNA samples on gels. It contains two dyes, xylene cyanol FF and orange G for visual tracking of DNA migration during electrophoresis.
- Add 1/6 volume of 6X DNA loading buffer to DNA samples.
- 6X DNA loading buffer can be ordered separately (Cat. No. 10010).



DNA fragment size	gel concentration	Xylene cyanol*	Orange G*
20 bp - 400 bp	3.6% agarose	280 bp	2 bp
60 bp - 400 bp	8% Nondenaturing Acrylamide	160 bp	**
25 bp - 150 bp	12% Nondenaturing Acrylamide	70 bp	**

* in 1X TBE buffer, approx.; ** below DNA fragments

Quality Control

- Agarose gel analysis: DNA bands are accurate in size and distinguishable.
- DNA ladder did not show visible degradation after incubation overnight at 37°C

Product Use Limitation

This product is developed and sold for research purposes and *in vitro* use only. Please refer to BioDynamix.com for Material Safety Data Sheet of the product.

BioDynamix

- 🏠 601 Genome Way, Huntsville, Alabama 35806, USA
- 🌐 <https://BioDynamix.com>
- ✉ support@BioDynamix.com

